

King House

34 one, two and three bedroom apartments
in the heart of Swindon's Old Railway Quarter.



Thomas
HOMES

THE OLD
RAILWAY QUARTER
SWINDON

Heritage Plaza

Selling agents

richard james
sales • lettings • new homes



01793 520720 • richardjames.info

Artist's impression. Indicative only.

THE OLD
RAILWAY QUARTER
SWINDON

Call 01793 538 973

visit thomashomes.co.uk or email plaza@thomashomes.co.uk

A landmark development by



Selling agent



01793 520720 • richardjames.info

Property Misdescriptions Act

These particulars have been prepared for prospective purchasers, for guidance only. They are not part of an offer or contract. While some descriptions are inevitably subjective, and information is given in good faith, they should not be relied upon as statements or representations of fact. All measurements are taken from plans and must, therefore, be treated as approximate. Some variation in the finished construction or landscaping should be expected. Any artist's impressions were commissioned before finalisation of the plans and landscaping details and, as such, are for illustrative purposes only. Any landscaping shown on artist's impressions and site plans indicate possible mature landscaping. Indicative interior photography taken at previous Thomas Homes developments and Heritage Plaza. Please note: Building sites can be dangerous, when visiting, please take sensible precautions and do not allow children to wander unaccompanied. The Information contained within this literature is correct at the time of going to press September 2011.

Thomas Homes Ltd, Arlington House, Curridge, Thatcham RG18 9EF

v.1

thomashomes.co.uk



First floor

The second phase of this landmark development, King House comprises 34 high spec 1, 2 and 3 bedroom apartments arranged over 3 floors, with the ground floor providing covered parking and a lift to the first floor. Six of the first floor apartments also enjoy a private terrace.



■ First floor apartments

- | | | | | | |
|-------------------------------------|-------------------------------------|---|---|-------------------------------------|-------------------------------------|
| Plot 35
1 bedroom, with terrace. | Plot 37
1 bedroom. | Plot 39
3 bedroom, with ensuite. | Plot 52
2 bedroom, with ensuite and terrace. | Plot 54
2 bedroom, with ensuite. | Plot 56
1 bedroom, with terrace. |
| Plot 36
1 bedroom, with terrace. | Plot 38
2 bedroom, with ensuite. | Plot 40
2 bedroom, with ensuite and terrace. | Plot 53
2 bedroom, with ensuite. | Plot 55
1 bedroom. | Plot 57
1 bedroom, with terrace. |

Second floor

The second floor of King House comprises 12 apartments, some with balconies overlooking the open central raised courtyard.



Prism House showhome



Second floor apartments

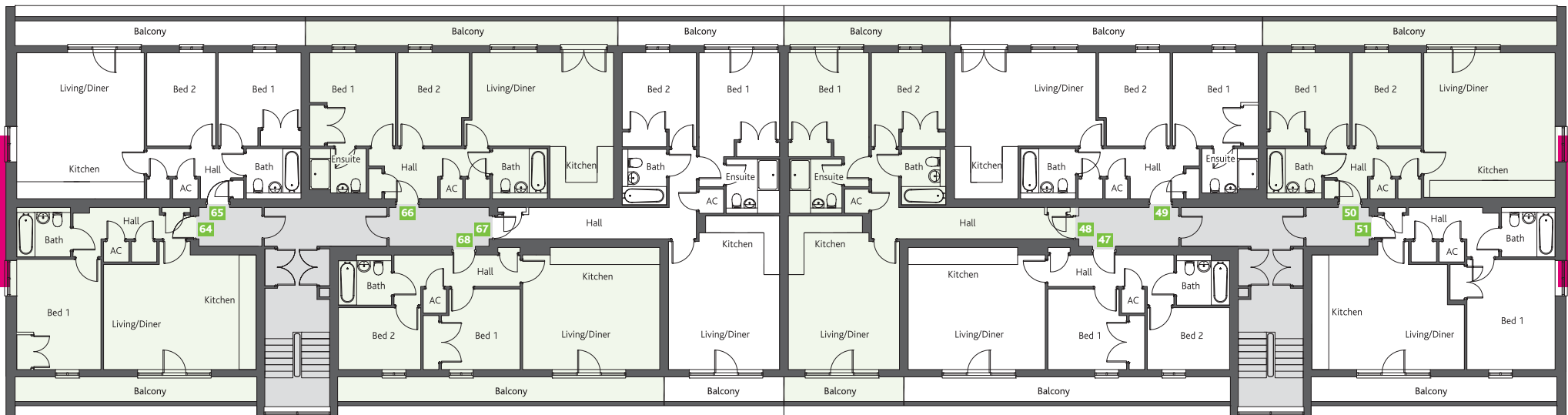
- Plot 41
1 bedroom, with balcony.
- Plot 42
2 bedroom, with ensuite and balcony.
- Plot 43
2 bedroom, with ensuite.
- Plot 44
2 bedroom, with ensuite.
- Plot 45
2 bedroom, with ensuite and balcony.
- Plot 46
2 bedroom, with ensuite and balcony.
- Plot 58
2 bedroom, with ensuite and balcony.
- Plot 59
2 bedroom, with ensuite.
- Plot 60
2 bedroom, with ensuite.
- Plot 61
2 bedroom, with ensuite.
- Plot 62
2 bedroom, with ensuite and balcony.
- Plot 63
1 bedroom, with balcony.

Third floor

In addition to high specification and quality finish, third floor apartments at King House enjoy increased living space and all benefit from private balconies (plots 48 & 67 have two balconies).



Prism House showhome



■ Third floor apartments

■ Communal areas
See back page for dimensions.

- Plot 47
2 bedroom, with balcony.
- Plot 48
2 bedroom, with ensuite and dual aspect balcony.
- Plot 49
2 bedroom, with ensuite and balcony.

- Plot 50
2 bedroom, with balcony.
- Plot 51
1 bedroom, with balcony.
- Plot 64
1 bedroom, with balcony.
- Plot 65
2 bedroom, with balcony.

- Plot 66
2 bedroom, with ensuite and balcony.
- Plot 67
2 bedroom, with ensuite and dual aspect balcony.
- Plot 68
2 bedroom, with balcony.

Call 01793 538 973

visit thomashomes.co.uk or email plaza@thomashomes.co.uk